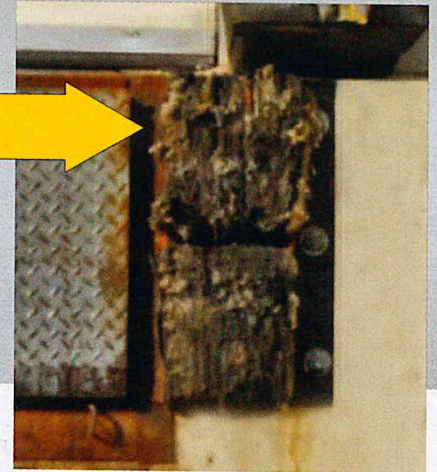
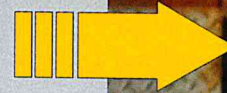


STEELFACED DOCK BUMPERS

Prevent Dock Destruction **PROTECT YOUR INVESTMENT**

TYPICAL LAMINATED & MOLDED BUMPERS

Worn out, misapplied and underspecified bumpers will cause damage to concrete at the dock, damage to dock equipment and severe damage to building walls.

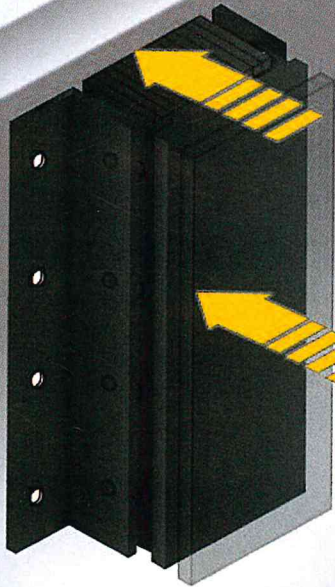


STEEL-FACED DOCK BUMPERS

Hard-wearing, long-lasting protection for your loading dock!

Steel-Faced Dock Bumper. We offer you the lowest lifetime ownership cost because they will absorb more shock and abrasion than conventional bumpers. That means longer wear expectancy with few if any replacements, and more importantly, the best dock protection money can buy!

Steel-Faced Dock Bumpers will give you "Free Float" protection through structural tie rods that float through elongated holes in the face plate. This combines the impact absorption protection of conventional bumpers with the superior durability of a steel face plate.



STEEL-FACED DOCK BUMPERS

Prevent Dock Destruction!

APPLICATION

- Where the toughest dock protection is required
- Medium to high-use loading docks

FEATURES

- 10 Year Limited Warranty
- 3/8" thick high-carbon steel face
- Elongated holes allow "free float" of steel face plate
- Steel face absorbs impact
- 3/4" steel support rods
- Steel face reduces wear on rubber laminates
- Bumper is fastened to dock surface through its 1/4" steel side angles and/or flat plates depending on the model chosen

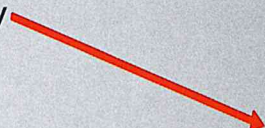


Laminates made of 100% recycled fabric-reinforced rubber

INSTALLATION STYLES

- 4" or 6" projection. Larger projections available through the use of bumper bracketing (larger projections required for decline approaches)
- Horizontal or Vertical (vertical generally offers the best protection)
- Standard Model: angle both sides for anchoring
- P1 Style: angle one side for anchoring, flat plate one side for welding
- P2 Style: Flat plate on both sides for welding

Steel faced bumpers installed too late here to save these dock seals, don't delay, get yours today

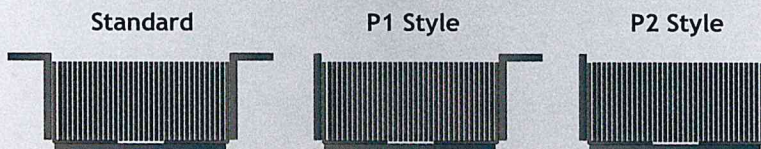


Prevent your dock seals from being damaged by installing steel-faced dock bumpers!

Traditional cheaper bumpers wear down due to normal loading/unloading operations at the dock

Steel faced dock bumpers DO NOT wear because of the engineered design that provides a solid steel plate at the front while still absorbing the shock of trailers backing into them.

INSTALLATION STYLE OPTIONS



OTHER PRO-DOOR & DOCK SYSTEM PRODUCTS

Dock Lights

Trailer Stands

Overhead Doors

Dock levelers

Truck Restraints

Wheel Chocks

Bumpers



"Professional Installation & 24 Hour Service"

Phone: 416-676-1117

1-888-676-1117

email: sales@prodoor.ca

visit our website at prodoor.ca

3425 Laird Rd. Mississauga, ON L5L 5R8